

**Kete and Koha:  
integration built on  
Open Standards**

# Walter McGinnis

- Katipo Communications, Ltd.
- walter@katipo.co.nz
- http://twitter/wtem

the full paper can be  
found at:  
<http://j.mp/9MCRD4>

This will be a more practical talk than the original paper.

It was aimed at a broad audience that wasn't familiar with Koha or Kete.

Obviously I would be mostly preaching to the converted at this conference.

One thing that should be acknowledged is the debt the project owes to Horowhenua Library Trust. The software was originally written for Kete Horowhenua which some of you will be familiar with.

Joann Ransom and Rosalie Blake and the rest of Horowhenua Library Trust were again visionary in their commitment to using an open source solution and coming to Katipo with an inspired idea. We ended up creating HLT's second big open source project, Kete.

The original paper gives more details about the whys and hows, but a thanks is owed to HLT for leading the way, again.

Russel Garlick, the original Katipo project manager, is also owed thanks.

# What I'll be covering today

- What is Kete?
- How to integrate Kete and Koha?

I'll introduce the Kete project and give some background on why it is useful to users of Koha.

I'll give a tour of how a Kete site can pull in results from a Koha OPAC.

We'll also look at Koha's search results querying a Kete site.

If we have time we may cover:

- \* What useful tools and strategies can we reuse for other services.
- \* Why I'm excited about Kete 2.0 and discovery of library resources.

**My background**



# Country (skate) Punk

\* DIY culture

\* Instilled a value for self definition

# Actor

(& photographer & filmmaker)



photograph by Raphael Matto

As an actor, I also value:

- \* immediacy (of expression)
- \* truthfulness
- \* perspective (often multiple, on the same topic)

# Antarctic Garbageman

## (& gas station attendant & janitor)

### Portrait of Walter McGinnis

[Philip Greenspun's Homepage](#) : [One Member](#) : Portrait

---



- Comment:

The streak in the middle of the photo is me during the Sunset Polar Plunge (polar plunges happen up to four times a year, one jumps into the sea through a whole cut in the ice), Scott Base, Ross Island, Antarctica, 1996.

- Uploaded: October 8, 1999
  - Original Name: Plunge2.jpg
- 

Antarctica is, of course, a stunning place. I came home with lots of photos.

It also had:

\* incredible history of

- exploration
- human behavior in an extreme location
- of work

+ most vehicles, buildings, and machines have names that were lovingly decided  
+ some of the equipment, some of the Caterpillar tractors, date back to when Edmond Hillary drove them to the Pole in the 50s. Just ask someone that has been around for awhile about a name of a vehicle and you would often get a complete oral history of it.

I've always wanted to do a site called "Antarctic Stories", maybe one day. I think Kete would be an excellent platform for it.



**Which all leads to?**

# Being an open source computer nerd!

I came back after wintering over Antarctica in 1996 with a desire to put my photographs on the web

\* Introduced to photo.net and Philip Greenspun and Web Tools Review (a forum for those developing database backed websites)

\* Started using open source software to host my photos on the web

\* Took a free bootcamp and got hired out of it for arsDigita

\* Started contributing to arsDigita Community System open source project as an employee

\* Also started helping others build collaborative community websites (usually based on an open source platform of some sort and usually with some aspect of the result be contributed back to an open source project). I've been doing it for almost 12 years professionally and a few years before that semi-professionally.

All this put me in a great position to help create Kete.

# What is Kete?

Kete is an online platform that combines tools from content management systems and digital repositories with the directness and low barrier of use of a wiki and the resource findability of the social web.

In practice, it is a publishing, collaboration, and sharing engine.

**i.e.**

# an ongoing communal brain dump

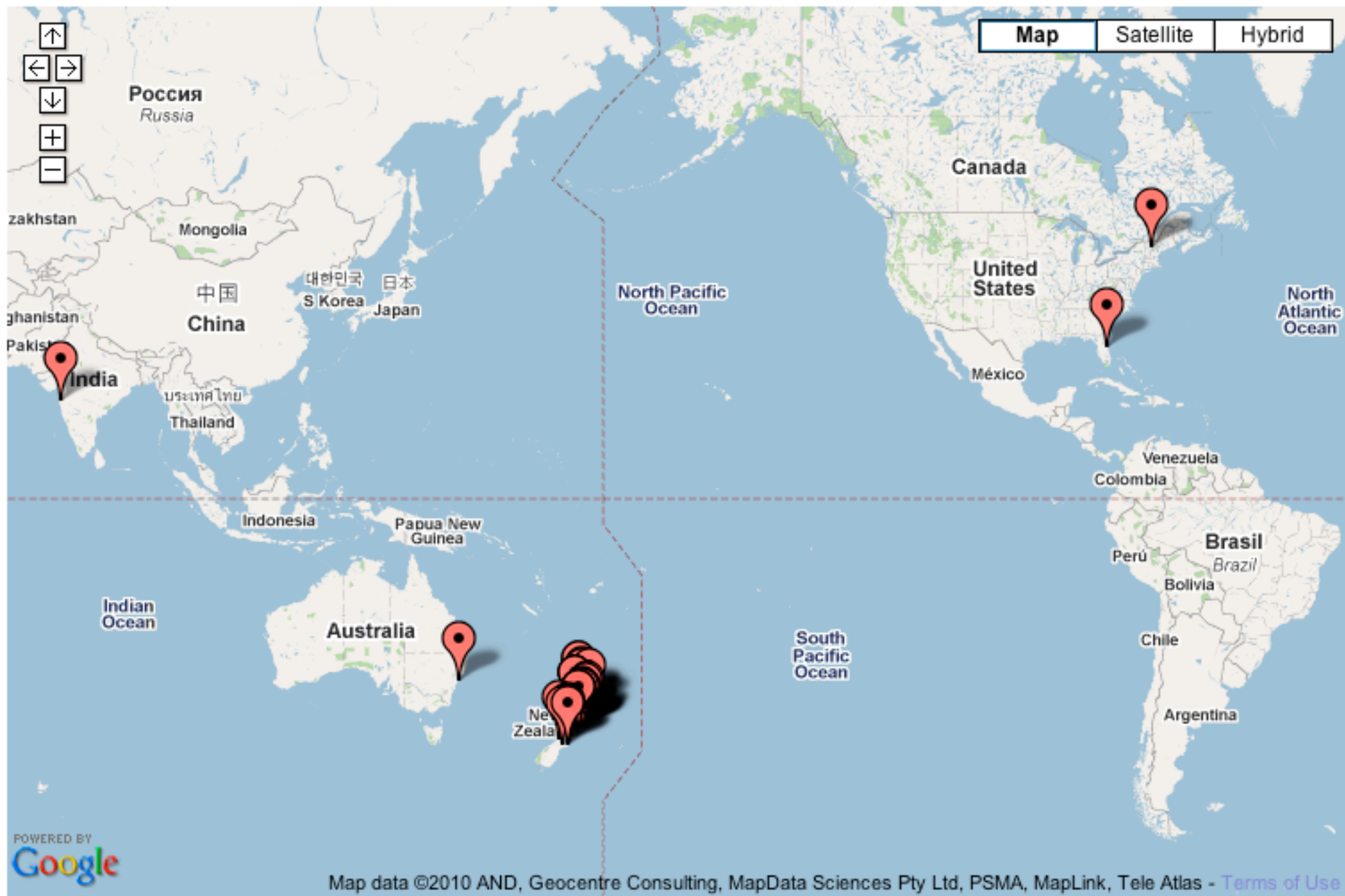
Your Kete mileage may vary depending on the quality of your brains.

In seriousness, what your Kete is, much as many of your community facing projects, is really defined by its purpose and the quality of effort you put into it.

Kete is thus a platform for you and your users to express yourselves. What you come up with is up to you.

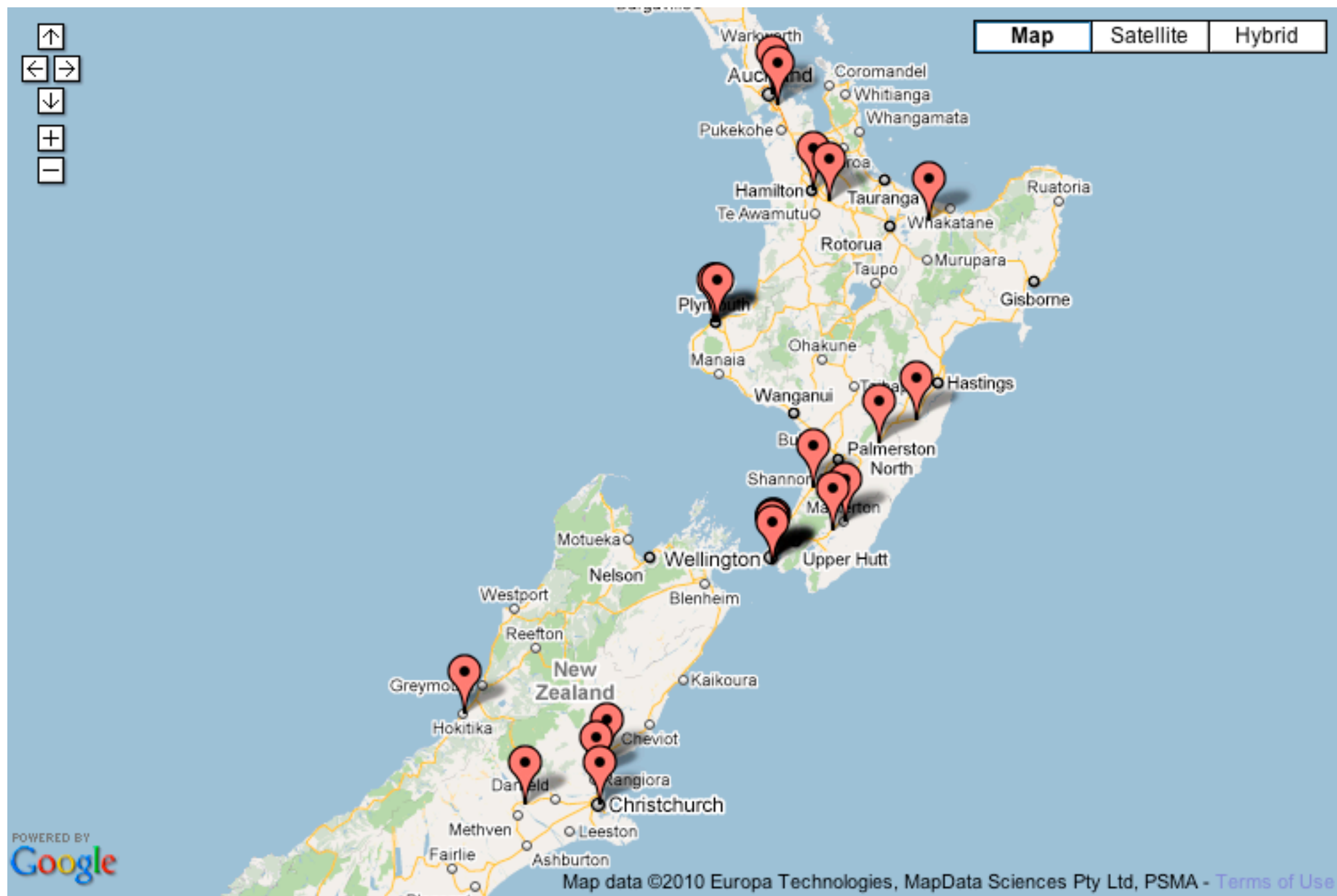
What have people come up with?

**Sites Using Kete** [ map | list | add site ]



[http://kete.net.nz/en/site/kete\\_sites](http://kete.net.nz/en/site/kete_sites)

There are several more unreleased sites in other areas of the world, such as the Middle East, but you can see that the highest density of sites.



This isn't a complete display, there are probably a dozen more sites in New Zealand that aren't listed yet.

It's been fun to see others take up Kete and do new things with it.

At its core, Kete has the philosophy that putting something online is only the beginning of that thing's lifecycle, not the end of it.

It should be like planting a seed. If planted well and looked after, seeds should grow and bear fruit.



## Topic: Earthquake and aftershocks September, 2010

Topic Type: Event

A collection of information related to the earthquake on September 4th, 2010 that rocked Christchurch and Canterbury. Add images, web links, and stories to this topic.

- [Wikipedia article](#)
- [Earthquake stories from The Press](#)
- [Christchurch Quake Live](#)  
Based on Geonet data. Data presented in a number of different diagrams, formats.
- [Christchurch Quake Map](#)  
A map that runs through the earthquake and its aftershocks graphically over time.

[http://ketechristchurch.peoplesnetworknz.info/canterbury\\_earthquake\\_2010/topics/show/163-earthquake-and-aftershocks-september-2010](http://ketechristchurch.peoplesnetworknz.info/canterbury_earthquake_2010/topics/show/163-earthquake-and-aftershocks-september-2010)

Here's a recent example of this on Kete Christchurch. This is a snippet from the topic discussing the September earthquake and aftershocks.

As you can see the amount of text is quite small. In fact the first iteration was only the top paragraph, not even the links. It was a basically a call for information about the quake.

## Related Items (210)

Create | Link Existing | Remove

### Images (175)



[170 more like this >>](#)

### Topics (20)

- Post Earthquake Chimneys
- Post Apocalyptic Phantasmagoria
- 158 - 160 Manchester St
- Struthers Lane
- Durham Street Methodist Earthquake Impact
- 15 more like this >>

### Audio (1)

- Sound of earthquake in shed

### Videos (0)

### Documents (0)

### Web Links (14)

- NZ Herald, October 15th, 2010: Heritage demolition 'probably irreversible'
- 158 Manchester St, September 7th, 2010 showing cracks in brick, broken windows, and marked Danger
- Stuff.co.nz, Moata's blog idle: More than bricks and mortar
- Close Up Video Segment: Christchurch's unique identity
- Archive of Twitter postings using the #eqnz hashtag
- 9 more like this >>

What's really interesting about this topic is that that the little seed, the call for people to gather their information in the topic, grew into a cluster of information on the site.

It's a way for users to self curate information. Create a topic that guides the action of your users and then they will pitch in, usually based on the intent of the topic, but sometimes in beautiful and unexpected ways that were even better than your idea.

You can see the variety of types of items that Kete supports. Obviously the amount of images collected about the earthquake compared to all those on flickr is not huge, but it's not insignificant either and it is tied directly to specific topics, such as streets or a building. From there a lot more information can be added.

I'm particularly impressed that someone has uploaded a piece of audio that records the sound of an aftershock from inside a shed.

華人網路社區  
Chinese Digital Community  
Chinese New Year 2010

Search Chinese Digital Community Go

Home Browse: Site or Chinese New Year 2010 Groups About Help Add Item Register Login

**Preview revision #51: view live Vote now - 2010 Digital Photo Competition -  
Topic: Vote now - 2010 Digital Photo Competition -**

Topic type: Event

We have the 10 finalists for the 2010 Digital Photo Competition. Voting closes at midnight on Sunday 14 March.

Thank you to all those who participated in the 2010 Digital Photo Competition, and enriched the website with beautiful images for future generations.  
We received over 100 images and have chosen 10 finalists.

**Vote for your favourite photo:**

Which is your favourite photo?

- 1. National treasures
- 2. Fan dance
- 3. Little tiger toy
- 4. Little paper lantern
- 5. Clock tower
- 6. Zebra lanterns
- 7. Grasshopper
- 8. Under the sea
- 9. Little girl with lantern
- 10. Dog guarding sheep

See results

feedback surveys

The below thumbnails (left to right) match up with the poll numbers 1 to 10.  
Click on a thumbnail to see photos in detail.

The winner will be announced on this website on 15 March in the afternoon.  
Good luck, finalists!

Tags: competition, winner, highly commended

**CNY 2010 Photography Competition**

Categories: Social Life & Customs and Events & Festivals

Latitude and Longitude coordinates: -  
36.867, 174.767  
(javascript needs to be on to use Google Maps)

[http://chinesecommunity.org.nz/en/chinese\\_new\\_year\\_2010/topics/preview/148?version=51](http://chinesecommunity.org.nz/en/chinese_new_year_2010/topics/preview/148?version=51)

Here we have the Chinese Digital Community a joint project of the New Zealand Chinese Association, Auckland Branch, and Auckland City Libraries.

After the most recent Chinese New Years celebration, they ran a photo contest. People could submit their photos at the library or on the site.

They then ran a poll on the site, in this topic, you can see that it is an earlier version of it, to gather votes for the best photo from judge selected nominations.

This is a great example of the extra little work that does wonders for community engagement.



華人網路社區  
Chinese Digital Community  
Chinese New Year 2010

Search Chinese Digital Community Go

Home Browse: Site or Chinese New Year 2010 Groups About Help Add Item Register Login

Item Details Edit History Discuss (7)

**Topic: 2010 Digital Photo Competition - results announced**

Topic type: Event

Announcing the winner and highly commended finalists of the 2010 Digital Photography Competition.

Auckland City Libraries wishes to thank all those who entered the 2010 Digital Photography Competition.

The online competition was part of Auckland City Libraries' Chinese New Year celebrations. The intention was to capture the essence of Chinese New Year in Auckland via photos. The photos would then become part of the legacy of the Chinese Digital Community.

The competition closed on 7 March with 130 entries. Many of these photos were colourful and of a high quality.

On 8 March, we selected 10 finalists for a people's choice poll to determine the winner.

**Results**

**Winner:** National Treasures (by v0813877) aka cheeky pandas.  
*The winner gets a \$250 dinner voucher to use at Orbit Restaurant, Auckland's Sky Tower.*

**Highly commended:**

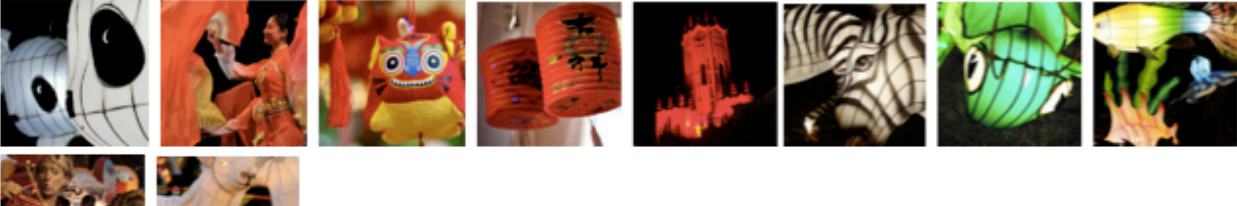
- Little girl with lantern (by Amélie Raoul)
- Dog guarding sheep (by mastersgerald)
- Zebra lanterns (by tricia)
- Under the sea (by sarahg10)

*Each highly commended finalist gets a double movie pass to use at the Sky City cinemas.*



Congratulations!

**Winners - Auckland City Libraries will be in touch soon.**

*Click on a thumbnail to see the 10 finalist photos in detail.*




**Tags**  
Tags: competition, winner, highly commended

**Related Items (35)**  
**Images (25)**  
  
  
[16 more like this >>](#)

**Topics (10)**  
[Create](#) | [Link Existing](#) | [Remove](#)

**2010 Digital Photo Competition - results announced**  
Categories: Arts & Culture and Festivals & Events

 2010 Digital Photo Competition - results announced by Auckland City Libraries is licensed under a Creative Commons Attribution-NonCommercial-Share Alike 3.0 New Zealand License

[http://chinesecommunity.org.nz/en/chinese\\_new\\_year\\_2010/topics/show/148-vote-now-2010-digital-photo-competition](http://chinesecommunity.org.nz/en/chinese_new_year_2010/topics/show/148-vote-now-2010-digital-photo-competition)

Here's the version of the topic, the latest, that announces the results.

One thing I like about this is that all the nominations, even those that were just submitted, are available to browse and I can decide for myself what I think of the results. Other aspects of the collection are discoverable in a variety of ways, too.

I can carry on to related topics, like Chinese New Years generally, or perhaps a biography of the photographer that won.

But there is also something else captured by this topic...



**Library admin**  
said **Re: result??**

Hi Kiwi\_land

So sorry about the delay. We will definitely be announcing the winner soon, and this is likely to be some time tomorrow, Wednesday 17 March.

We've had a few issues finalising the results, but I assure you and all those out there reading this, there shall be no surprises as to who will be crowned the winner.

Thank you so much for your patience!

Admin

Flag as: [inaccurate](#) | [duplicate](#) | [inappropriate](#) | [entered by mistake](#) | [copyright violation](#)

[Reply](#)

Posted on March 16th, 2010 at 4:06 PM



**Passerby**  
said **Egg-bound??**

The competition organizer finalized the winner in a wrong way. It should let public vote in the top ten photos from all works first, then a panel of experts to choose or vote in the winner. It is incontestable that the photograph with highest votes is absolutely not the best photo among the ten "finalists" above!!

Flag as: [inaccurate](#) | [duplicate](#) | [inappropriate](#) | [entered by mistake](#) | [copyright violation](#)

[Reply](#)

Posted on March 17th, 2010 at 12:04 AM



**kiwi\_land**  
said **Re: Egg-bound??**

I don't agree with you. The 'panel' has already chosen the top ten finalists among the 130 entries in this competition. and besides, this is a 'digital photography competition' not a 'PROFESSIONAL' photography competition, and most of the top 10 photos do look artistic and with excellent presence (ie the little tiger, the dog, the pandas and the zebra etc)

Flag as: [inaccurate](#) | [duplicate](#) | [inappropriate](#) | [entered by mistake](#) | [copyright violation](#)

[Reply](#)

Posted on March 17th, 2010 at 12:28 AM

[join this discussion](#)

...reactions to the results!

In the discussion we have someone that has a bone to pick with how they were chosen and then someone else that disagrees with "Passerby".

For me, this is great. It takes the responsibility of having to reflect the perspectives of all users off the staff of the site and lets the users speak for themselves.

# Scratch your own itch!

In other words, Kete provides a place for users to do what we are used to in the Open Source community. That is to “scratch your own itch”, but this is in the form of content and information for their community.

This is one of those things that sometimes makes it hard to describe Kete. Each site is different and can be used for dramatically different purposes. It’s a pretty loose and flexible platform of tools.



# Kete Pukekura Park

George Fuller Collection | 60 Springs | Cory Smith : Notable Trees of New Plymouth | Derek Hughes photography | David Medway : birds and plants | more...

[Item Details](#)

[Edit](#)

[History](#)

[Discuss \(1\)](#)

## Topic: Racecourse to Bowl new access road proposed

Topic type: [Places](#)

The correspondence and documentation collected by the Friends of Pukekura Park relating to the proposed access road from the Racecourse to the Bowl of Brooklands. Please register with the site to join in a discussion on this topic (discussion at bottom of page).

The New Plymouth District Council resolved at a meeting on 29th June 2009 to realign and reinforce the existing entrance to the Bowl of Brooklands, if practical, "Option3". The archives related to this topic follow the progress of the debate and public outcry following the initial Council decision on 9th June 2009 to cut a new road.

10th June 2009:

The creation of the new access road (Option One) from the racecourse to the Bowl of Brooklands will result in the destruction of an area of native forest, which will affect the unique atmosphere of the Park and Bowl, and will severely impact upon the trees allowed to remain.

The Friends have been in contact with the NPDC regarding this matter since December 2008, when the President was informed that the pegs for the new road could be seen in the area near the existing access road. [The Pukekura Park Management Plan \(a statutory document\)](#) should have been followed from the outset. Given the importance of the native forest and waterways to the Park, a coherent development plan for the Park and environs should, and could, have been initiated at the earliest stage of racecourse developments which affect the neighbour, Pukekura Park. [See our initial concerns presented in a written submission to NPDC, 5th March 2009](#). Read the text of [the oral submission to the Council](#), and [the illustrated submission](#), presented on 9th June 2009.

The Friends believe that the existing access road from the racecourse could be improved and realigned to meet the new situation, but the NPDC Council resolved by a majority on Tuesday 9th June 2009 to approve the proposed road 'Option One'. They perceived that a delay for community consultation and the planning of mitigation may jeopardise events at the Bowl if a route could not be built quickly. The health of the most significant tree in the area, a giant puriri, is likely to be compromised, and the character of the area destroyed.

[See the details about our collection of related documents, images and radio interviews in the panel below.](#)

[View maps of the Park by clicking here.](#)

### Tags

Tags: [Bowl of Brooklands](#), [Kohekohe](#), [Racecourse access road](#), [Pukekura Park](#), [puriri](#)

### Racecourse to Bowl new access road proposed

Location: Racecourse to Bowl access road

Creator or author: FoPP



Racecourse to Bowl new access road proposed by Kete Pukekura Park is Copyright with license for site

<http://kete.pukekura.org.nz/site/topics/show/76-racecourse-to-bowl-new-access-road-proposed>


Here's a topic that really shows that.

In this case, the Friends of Pukekura Park are spreading information about a proposed road alteration in Pukekura Park. They used Kete Pukekura Park to inform their members about what was happening as well as to educate the New Plymouth City Council as to what alternative proposals they were putting forward.

They were successful in fighting the original proposal from Council.

🔗 Related Items (103)

Images (68) ▾



« | ⋮ | ▶ | »

Topics (2) ▾

- People of Pukekura Park
- Places

Audio (5) ▾

- Destroy
- Alternative
- Trees
- Plan
- Thin end of the wedge

Documents (21) ▾

- Press release - Contract Awarded for New Bowl Road
- Decision ends the battle of the Bowl
- Magnificent work by Bowl volunteers
- Officer's report on the proposed road access from the Racecourse to Bowl of Brooklands
- NPDC weekly feature in Midweek
- 16 more like this >>

Web links (7) ▾

- Contract Awarded for New Bowl Road
- The Mayor responds
- Interview with George Fuller
- Park keeper's protest
- Friends battle for park trees
- 2 more like this >>

Create | Link Existing | Remove

You can see that they collected many related items, such as links to news articles, recordings of interviews and talks about the issue, uploaded documents including reports and engineering plans, and images of a series of protests by George Fuller at the park.

This all served to help them persuade Council and the public about why the proposal should be reconsidered.

So using Kete can be quite practical.

They also captured a lot of historical information as the events were unfolding.

This highlights an important benefit of using this collaborative tool platform to get things done:

\* materials are collected as they are generated and become a historical asset with no extra work

You can see that the image is in slideshow mode for playing all the 68 related images on the page.



## Topic: Dropoff/Pickup Volunteer Rotation

Topic type: [SRTS Item](#)

Interactive table to assign us to shifts directing UES Drop-off & Pickup traffic-flow (AM 7:50-8:30; PM 2:20-2:55). Ideally, we use this weekly to communicate changes for the upcoming week. Use the "Discuss this Topic" area at bottom for at-length ideas and questions.


Week 9/27-10/1	Monday		Tuesday		Wednesday		Thursday		Friday		Notes
	dropoff	pickup	dropoff	pickup	dropoff	pickup	dropoff	pickup	dropoff	pickup	
Jen Bean											Can fill in on short notice.
Juliana Jennings		√		√		?				?	Probable for Pickup on all wkdays--aside from Thurs.
Diana Koliander-Hart		√		√		√		√			Regular schedule TBD.
Jennifer Matthews	√				√				√		
Barry McPhee	√		√		√		√		√		Hoping to scale back.

[http://montpelier.energy-team.org/safe\\_routes\\_to\\_school/topics/show/131-dropoffpickup-volunteer-rotation](http://montpelier.energy-team.org/safe_routes_to_school/topics/show/131-dropoffpickup-volunteer-rotation)


Here's another practical use where a community Kete site for the Montpelier Energy Team site is used to "scratch an itch".

The Montpelier Energy Team is about encouraging conservation and here they lead by example. They created a topic to schedule a Dropoff/Pickup Volunteer Rotation for the local daycare.

A bit more mundane than a fight with Council, but you can see how they tailored the tool's use to their needs.


 **Carol Paquette**  
said **Carol's shifts**

Hi Barry, Sorry it took me so long to get back to you. I could do Tuesdays pickup and Thursday mornings I hope this helps. Let me know thanks .Carol


 Flag as: [inaccurate](#) | [duplicate](#) | [inappropriate](#) | [entered by mistake](#) | [has typos](#)

[Reply](#) Posted on September 23rd, 2010 at 10:26 AM

---


 **Jen B.**  
said **I'll be there tomorrow!**

Hi Barry- Please sign me up for Thursday mornings. Thanks, Jen

 Flag as: [inaccurate](#) | [duplicate](#) | [inappropriate](#) | [entered by mistake](#) | [has typos](#)

[Reply](#) Posted on September 23rd, 2010 at 11:48 AM


---

 **Shelley Quinn**  
said **My apologies**

My apologies for being a no show this morning but it looks like you had help according to the site. My son is sick this morning so I am home with him. I'll check my schedule for next week.

Thanks,

Shelley

 Flag as: [inaccurate](#) | [duplicate](#) | [inappropriate](#) | [entered by mistake](#) | [has typos](#)

[Reply](#) Posted on September 23rd, 2010 at 11:52 PM

Not only do they have the table for the Rotation Schedule, but they add discussion to alert each other of any issues that are out of the ordinary.

As you can see, each Kete site, is really defined by what you use it for and what you put into it. The most successful sites become apart of how the community of users get things done.



## Welcome to Kete Katipo

This site is aimed at Katipo staff, clients, and those interested in Katipo's services. It's an example of [Kete](#), an open source project originally developed by Katipo, being used as an intranet/extranet.

If you haven't registered yet, don't be surprised if you don't see much here. Most of the material on the site is private and securely tucked away from public view.

The site contains client specific areas where members of the client team and Katipo staff may add items in collaboration related to the projects they are working on, such as proposals, images of wireframes, etc.

It also contains areas limited to Katipo staff where we document our processes in an easy to update manner that promotes cross-linking of related items.

If you would like to know more, feel free to [register on the site](#) or use the "Contact" link to email us.

### About Kete

Kete is Open Source Digital Library and Archiving software developed by [Katipo Communications](#) and the Horowhenua Library Trust.

Kete is purpose built to enable communities to collaboratively build their own digital libraries, archives and repositories.

Katipo developed Kete to enable communities to tell their stories.

- [Kete on the Katipo website](#)
- [Katipo's Kete Portfolio](#)

- [Katipo Homepage](#)

### Contents by type

- [Topics \( 36 \)](#)
- [Images \( 16 \)](#)
- [Audio](#)
- [Video](#)
- [Web links \( 1 \)](#)
- [Documents \( 1 \)](#)
- [Discussion](#)

### Katipo Technical Blog

- [Kakama Technical Overview](#)
- [A more concise way to call single test file in ruby](#)
- [Using git feature branches to make your master branch commits list concise](#)

### Kete.net.nz

- [Pulling in results from YouTube](#)
- [Debian Lenny Installing Required Software](#)
- [Using Git and Github](#)
- [How do I hide the basket listings under the Site name?](#)
- [How can I hide the "more..." link in the basket list in the header?](#)

<https://kete.katipo.co.nz/>

Here's a third example. Katipo's own Kete site.

We use this as both an intranet/wiki, where we record and share internal company knowledge and processes, and an extranet where we collaborate with clients on their projects.

You can see that it appears to not have much content if you view the "Contents by type" list.

Logged in successfully

## Welcome to Kete Katipo

This site is aimed at Katipo staff, clients, and those interested in Katipo's services. It's an example of [Kete](#), an open source project originally developed by Katipo, being used as an intranet/extranet.

If you haven't registered yet, don't be surprised if you don't see much here. Most of the material on the site is private and securely tucked away from public view.

The site contains client specific areas where members of the client team and Katipo staff may add items in collaboration related to the projects they are working on, such as proposals, images of wireframes, etc.

It also contains areas limited to Katipo staff where we document our processes in an easy to update manner that promotes cross-linking of related items.

If you would like to know more, feel free to [register on the site](#) or use the "Contact" link to email us.

## About Kete

Kete is Open Source Digital Library and Archiving software developed by [Katipo Communications](#) and the Horowhenua Library Trust.

Kete is purpose built to enable communities to collaboratively build their own digital libraries, archives and repositories.

Katipo developed Kete to enable communities to tell their stories.

- [Kete on the Katipo website](#)
- [Katipo's Kete Portfolio](#)

Edit	History
------	---------

- [You're a Tech admin.](#)
- [Members](#)

- [Katipo Homepage](#)

### Contents by type

- [Topics](#) ( 36 | private: 624 )
- [Images](#) ( 16 | private: 30 )
- [Audio](#)
- [Video](#)
- [Web links](#) ( 1 | private: 52 )
- [Documents](#) ( 1 | private: 174 )
- [Discussion](#) ( private: 332 )

### Katipo Technical Blog

- [Kakama Technical Overview](#)
- [A more concise way to call single test file in ruby](#)
- [Using git feature branches to make your master branch commits list concise](#)

### Kete.net.nz

- [Pulling in results from YouTube](#)

If I log in though, I get a much different view.

The site is actually quite full of material, it's just mainly private.

The "Contents by type" now lists the private material that I have permission to see.

This suits our uses of Kete. Even though many Kete sites are all about public collaboration, Kete is equally good at using the same tools to collaborate in a private manner appropriate to the situation. I.e. Kete respects what we, Katipo, want to do with it.

# How to integrate Kete and Koha

**Adding Koha to Kete**



# Kete can pull from Koha in three main ways

- Alongside Kete search results
- On detail pages for Kete items
- On basket homepages

## Results in topics for your search 'maori battalion'

showing 1-4 results of 4

### John SILBERY

NOK: Miss Rangī Silbery (sister), 36 Murphy St, Wellington previously Manakau Any use of this item must be accompanied by the credit "Adopt an Anzac Project"

[more >>](#)

Related: 1 Discussion and 3 Images



### Pani PENE

Died age 40 years Any use of this item must be accompanied by the credit "Adopt an Anzac Project"

[more >>](#)

Related: 2 Images, 1 Topic, and 1 Document



### Tama PAURINI

NOK: Amo Paurini (mother), Foxton Rd, Levin Any use of this item must be accompanied by the credit "Adopt an Anzac Project"

[more >>](#)

Related: 2 Images and 1 Topic



### John TIMUIHA

NOK: Whawhai NATANA (TE HIWI) Mrs Donald Wilson, Kuku, Ohau, Levin (half sister) Previous Military Training: 3 years, 7th Wellington Regiment Declared Age: 20 years Height:

[more >>](#)

Related: 2 Images and 3 Documents



## More Resources

### Horowhenua Library Trust Catalogue

[Te mura o te ahi the story of the Maori Battalion](#)

[28 \(Maori\) Battalion](#)

[The 28th Maori Battalion](#)

[Te Hokowhitu a Tu the Maori Pioneer Battalion i...](#)

[Alan Duff's Maori heroes](#)

[28 Maori Battalion 23rd national reunion](#)

[Awatere a soldier's story](#)

[more »](#)

## Results via DigitalNZ

[Maori Pioneer Battalion flag](#)

[Members of the Maori Battalion](#)

[Maori Battalion disembarking from a troopship](#)

[Soldiers of the Maori Battalion marching to kee...](#)

[The return of the Maori Battalion](#)

[Maori Battalion at Alexandria](#)

[Maori Battalion in Egypt](#)

[more »](#)

[http://horowhenua.kete.net.nz/en/site/search/topics/for/maori+battalion?search\\_terms=maori+battalion](http://horowhenua.kete.net.nz/en/site/search/topics/for/maori+battalion?search_terms=maori+battalion)

This shows a search results page on Kete Horowhenua.

On the right, under "More Resources", you can see matching results from HLT's Koha.

These links will take you off to the records in the catalog for the matching book, periodical, etc.



## Topic: Horowhenua County Council

Topic type: **Organisation**

Horowhenua County was created when the southern part of Manawatu County was separated from the parent body in 1884.

This was a deliberate act of defiance against the Manawatu County Council. The petition which served as a 'Declaration of Independence' was signed by only 96 men, but this represented almost the whole ratepaying population of the region.

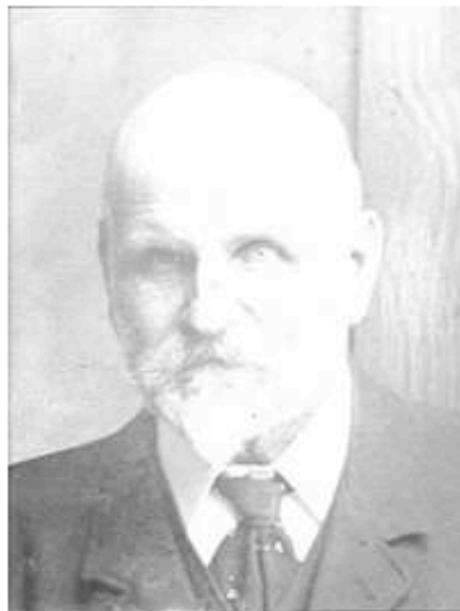
The County was largely amalgamated into Horowhenua District Council in 1989, along with Levin Borough Council. The southern end was lost to the new Kapiti District Council from Pukehou Hill, and the new northern boundary met that that Foxton, Opiki and Tokomaru now became part of the New Horowhenua District Council.

Reference: Horowhenua County and its People : A Centennial History by Anthony J. Dreaver. New Zealand : Dunsmore Press, 1984.

Some faces of the Horowhenua County Council:



Mr Alex John Hadfield, first chairman of Horowhenua County Council



James Malcolm, Horowhenua County Inspector 1901-1904 & 1906-1916, Horowhenua County Engineer 1916-1920



Tags

[+]

### Other Resources

#### Horowhenua Library Trust Catalog

[Gerhard Hendrik Engles](#)

[Shannon County Borough , Horowhenua County Coun...](#)

[John Kebbell](#)

[Horowhenua County Council , Shannon : Tokomaru](#)

[Horowhenua County Council , Shannon : Tokomaru](#)

[Frederick William Bills](#)

[Francis Robson II](#)

[Horowhenua County Centennial, 1885-1985](#)

[Horowhenua County Centennial, 1885-1985](#)

#### Results via DigitalNZ

[Nos. 37, 38, 48, 76, 111, 118, 137, 184, 185, 1...](#)

[Levin - The Cyclopedia of New Zealand \[Taranaki...](#)

[\[Nos. 37, 38, 48, 76, 111, 118, 137, 184, 185, ...](#)

[First Buller County Council Meeting 1877](#)

[GREY COUNTY COUNTY COUNCIL. \(Grey River Argus, ...](#)

[more »](#)

Powered by



Horowhenua County Council by Kete Horowhenua is licensed under a [Creative Commons Attribution-NonCommercial-Share Alike 3.0 New Zealand License](#)

<http://horowhenua.kete.net.nz/site/topics/show/114-horowhenua-county-council>

This is a topic page and it's an example of the second way Kete can be integrated with Koha.

I.e. it's an item detail page, and the same process will work with image, audio, video, document, or weblink detail pages.

Under "Other Resources", again you can see matching results from HLT's catalog.

You may ask how it is determining what "matches" if no user instigated search is done. In Kete we simply submit the title of the page (either as a boolean "and" search or a boolean "or" search, depending on your settings) to the external search source as search terms.

Basket was successfully updated.

Kete Horowhenua is a knowledge basket of images, audio, video and documents which are collected and catalogued by the community.

### Digitising Family history and whakapapa

DigitalNZ have written [this](#) excellent guide to get you started on digitising your family collection, and also gives a good list of online resources.

### Featured Topics

#### Cemetery Records



[View Topic >>](#)

#### Balloons 2010



[View Topic >>](#)

#### Historic Foxton ... today



[View Topic >>](#)

#### ANZAC Day 2010



[View Topic >>](#)

- [You're a Tech admin.](#)
- [Members](#)

#### What you can do

There are many ways you can participate in Kete Horowhenua. Learn [more>>](#)

#### [Kete.net.nz](#)

The Kete project site for users and developers.

#### Contents by type

- [Topics](#) ( 1,802 | private: 3 )
- [Images](#) ( 16,115 | private: 1 )
- [Audio](#) ( 94 )
- [Video](#) ( 32 )
- [Web links](#) ( 156 )
- [Documents](#) ( 1,324 )
- [Discussion](#) ( 188 )

#### Just arrived in Horowhenua Library Trust Catalog

- [Drumming](#)
- [NZ model flier's world : , the official magazine of the New Zealand Model Aeronautical Association Inc.](#)
- [Mindfood.](#)
- [Maisy , Christmas and other stories](#)
- [Black rose](#)
- [Very Private Murder, A /](#)
- [India in New Zealand: Local Identities, Global Relations /](#)
- [Taken by Midnight](#)
- [Knuffle Bunny Free: An Unexpected Diversion /](#)
- [The Valcourt heiress](#)

Lastly, you can pull in results from Koha on basket homepages.

In the sidebar, under “Just arrived...”, you can see the latest additions to the HLT catalog.

This differs from the other two ways in that it is based on a static URL (for the other ways, we add the search terms to the external search sources’ base URL). It can be any complete URL that returns a RSS or Atom feed.

Because Koha makes its search results available using the OpenSearch standard of having a feed available for its search service we can integrate it into Kete in these three ways.

# Use the search sources link to set up the first two and the homepage options for a basket for the last.

 [RSS feed for all items on site](#)

## Tools for basket: Site

[preferences](#) | [moderate contents](#) | [members](#) | [import content](#)

## Administrator's Toolbox

Controls: [basket profiles](#) | [topic types](#) | [content types](#) | [extended fields](#) | [choices for extended fields](#) | [search sources](#) | [site members](#) | [administer licenses](#) | [list site on Kete.net.nz](#) | [reconfigure site](#) | [OAI PMH Sets](#) | [Z39.50 search databases](#) | [Rebuild search databases](#)

Support: [documentation](#)

The upper box will appear on every page of a basket for basket administrators and contains a link that will let basket administrators set up the third type of Koha integration on a basket homepage if they click on “preferences”. I’ll come back to showing what that looks like in a few slides.

Below that, if I am logged in as a site administrator, every page on the site will give me the “Administrator’s Toolbox”. One of the links listed there is “search sources”. This will take me to where I need to go to set up the two first options for Koha integration.

Let’s take a look at that first.



## Search Sources

[Search](#) [+ Create New](#)

Title	Source target	Base url	Limit	
Horowhenua Library Trust Catalog	all	http://library.org.nz/cgi-bin/koha/opac-search.pl?idx=kw&format=rss2&q=	10	▼ <a href="#">Edit</a> <a href="#">Delete</a> <a href="#">Show</a>
Results via DigitalNZ	all	http://api.digitalnz.org/records/v1.rss/?api_key=.&search_text=NOT content_partner:"Kete Horowhenua" AND	5	▲ <a href="#">Edit</a> <a href="#">Delete</a> <a href="#">Show</a>

2 Found

Here's the meat of the external search sources page for Kete Horowhenua.

First up we have a summary of the configuration for HLT's Koha's catalog.

The key here is that the Base URL setting corresponds to an OpenSearch compatible URL for the external service that will return a RSS/Atom feed for its results if we tack on our search terms.

You may have already noticed by now that Koha is not the only service that Kete integrates with. Here we have the set up for the Digital New Zealand source, too.

This works because they both provide OpenSearch style feeds for search results, we can have as many OpenSearch compatible (Twitter, YouTube, to name a few) services as we would like configured here.

Incidentally, Kete, by design, also fulfills this requirement and each Kete site can be used as an external search source for not only Koha, but other instances of Kete itself. This is very handy if you want to have a number of Kete sites affiliated with each other.

## Update Horowhenua Library Trust Catalog



Title	<input type="text" value="Horowhenua Library Trust Catalog"/>	The title that the search sources will appear under.
Source type	<input type="text" value="Feed"/>	What type of source is this?
Source target	<input type="text" value="All"/>	A special selector for grouping similar search sources to different pages.
Base url	<input "="" type="text" value="http://library.org.nz/cgi-bin/koha/opac-search.pl?idx=kw&amp;format=rss2&amp;q="/>	What is the base url for this source type? A search string will be appended to the end so make it end in "?q=" or similar
More results url	<input "="" type="text" value="http://library.org.nz/cgi-bin/koha/opac-search.pl?q="/>	Like Base URL, except links to a site search instead of the search source. Make it end in "?q=" or similar. (optional)
Limit	<input type="text" value="10"/>	How many sources should be displayed? Might be overwritten internally, so won't always be used (optional - default 5).
Limit param	<input type="text"/>	Which param is used to limit results on the search source? Using this may speed up the time it takes to get results. Leave blank if unknown.
Cache interval	<input type="text" value="1440"/>	How long should the search source be cached for? (optional - in minutes - default 60)
Or Syntax	Case <input type="text" value="Doesn't matter"/> Position <input type="text" value="No OR syntax"/>	What case should 'or' booleans in user input be converted to, and where should they be placed (adding or syntax positioning will cancel out and/not syntax)?
And Syntax	Case <input type="text" value="Doesn't matter"/>	What case should 'and' booleans in user input be converted to?
Not Syntax	Case <input type="text" value="Doesn't matter"/>	What case should 'not' booleans in user input be converted to?
Source credit	<input type="text"/>	

Here's what the full configuration web form for creating or editing an external search source.

The "Source Target" is where we determine whether the service is available only on search result pages or detail pages or both (which is what "all" means).

There are several other technical settings there that you can change. The form usually has explanation under the field, but if that isn't clear feel free to ask a question about it on <http://kete.net.nz>.

So that is how you configure the first two options. It is powered by an open source Ruby on Rails plugin that was written for Auckland City Libraries and Digital New Zealand by Katipo. The code can be used in other Rails projects and is available at [http://github.com/kete/external\\_search\\_sources](http://github.com/kete/external_search_sources).

Log in to Your Account | Search history [ x ]

Home | Who we are | Where we are | Membership | Services & Collections | OPAC

**HOROWHENUA**  
*library* Trust

Library Catalog

Advanced Search | Tag Cloud

- Welcome**
- Home
  - Kid's Korner
  - TeenZone
  - Te Ao Māori
  - Friends

- Other Resources**
- Kete Horowhenua
  - Horowhenua Cemeteries
  - At Home care
  - Clubs and Organisations
  - Youth Connection
  - Disability Connection
  - More >>

**News From The Library**

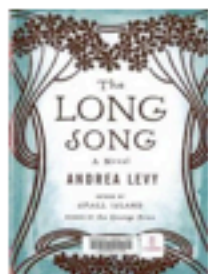
**Book a Librarian**

Need help with using email? Researching on the internet? Using our online databases? Working out a personal reading list? Brushing up your C.V.

[Why not Book a Librarian?](#)

*(published on 06/10/2010)*

**Wondering what to Read next?**



Check out this great list of [reviews](#) from one of our library users - if you would like to contribute your reviews just let us know

*(published on 17/09/2010)*

**New Orders**

Choose a group to see titles we have recently ordered

**Just Arrived**

Choose a group to see which titles are new to the library

**Library Notes**

Read the latest library notes

[More >>](#)

**Log in to Your Account:**

Login:

Password:

<http://library.org.nz/>

So how did I go about setting up the third way, including the “just arrived” items for the catalog on the site’s basket homepage, of integration Koha into a Kete site?

First up you need to figure out the corresponding URL for the feed you want to include.

In this case, I noticed the “Just Arrived...” section on the Koha’s homepage.

I submitted the form and arrived at results page that had an RSS button. By clicking that button, I ended up at a URL for the “just arrived” feed.

One thing to note is that that first feed URL was actually constrained to a particular category of newly added stuff in the catalog. I did a little URL surgery and chopped that limitation out of the feed and then copied it from the location bar.

## RSS or Atom Feeds

**Feed Title:**  [\(remove\)](#)  
**Feed URL:**   
**Display Limit:**  (optional) **Update Frequency:**  (in minutes - optional)

[Add Another Feed](#)

Then I went over to Kete Horowhenua's site basket's "Homepage Options" form (accessible via the "Tools for basket: Site" box > preferences link > "Homepage Options" tab).

Here's the section, at the end of the form, where you can add a feed you want to pull from on any basket's homepage.

Note that you can have more than one and that you can cache the results to help your site's performance.

You may have noticed on Kete Katipo's page that we had a few other services set up this way. In our case we pulled from the latest items on our blog and on Kete.net.nz.

So again, it can be used with any URL that returns either of the open standards of RSS or Atom feeds. In this case they don't have to be limited to OpenSearch search services.

**Koha can pull in Kete  
results on its search  
results page**



"maori battalion" returned 17 results.

Refine your search

Availability  
Limit to [currently available items.](#)

Libraries  
[Levin](#)  
[Foxton](#)  
[Shannon](#)

Authors  
[Gardiner, Wira](#)  
[Souter, Monty](#)  
[Te Ua, Henare](#)  
[Souter, Monty](#)  
[Awatere, Arapeta](#)  
[Show More](#)

Topics  
[28 \(MAORI\) BATTALION](#)  
[MAORI - BIOGRAPHY](#)  
[NEW ZEALAND. ARMY. E...](#)  
[WORLD WAR, 1939-1945...](#)  
[AWATERE, ARAPETA, 19...](#)  
[Show More](#)

Select All Clear All Unhighlight Relevance

Add to: Save Place Hold Tag

1. [Te mura o te ahi the story of the Maori Battalion](#)  
by Gardiner, Wira .  
Publisher: 1992  
Availability: **Copies available for loan:** Circulating[940.5412 GARD] (1).  
Log in to add tags.  
Actions: Place Hold Add to Cart
2. [28 \(Maori\) Battalion](#)  
by Cody, J. F .  
Publisher: 1956 Dept. of Internal Affairs Wellington  
Availability: **Copies available for reference:** Circulating[993.032 CODY] (1).  
Actions: Place Hold Add to Cart
3. [The 28th Maori Battalion](#)  
Publisher: 0  
Availability: **Copies available for loan:** Foxton Pemanent[993.105 28TH] (1).  
Actions: Place Hold Add to Cart
4. [Te Hokowhitu a Tu the Maori Pioneer Battalion in the First World War](#)  
by Pugsley, Christopher .  
Publisher: 1995 Reed Auckland  
Availability: **Copies available for loan:** Circulating[940.541293 PUGS] (3).  
Actions: Place Hold Add to Cart
5. [Alan Duff's Maori heroes](#)  
by Duff, Alan .  
Publisher: 2000 Random NZ  
Availability: **Copies available for loan:** Levin[920 c] (1), Circulating[920 c] (1).  
Actions: Place Hold Add to Cart
6. [28 Maori Battalion 23rd national reunion](#)  
by Souter, Monty .  
Publisher: 2002  
Other title: Te Poho o Rawiri Marae Gisborne.  
Availability: **Copies available for loan:** Shannon Permanent[940.541293 28MA] (1), Foxton Pemanent[940.541293 28MA] (1), Circulating[940.541293 28MA] (1).  
Actions: Place Hold Add to Cart
7. [Awatere a soldier's story](#)  
by Awatere, Arapeta ; Awatere, Hinemoa Ruataupare, Ed .  
Publisher: 2003 Hui Wellington  
Availability: **Copies available for loan:** Circulating[920 AWA] (1), Foxton Pemanent[920 AWA] (1), Shannon Permanent[920 AWA] (1).  
Actions: Place Hold Add to Cart
8. [Te Mura o te Ahi the story of the Maori battalion](#)  
by Gardiner, Wira .  
Publisher: 2004 Reed Auckland  
Availability: **Copies available for loan:** Circulating[940.541293 GARD] (1), Foxton Pemanent[940.541293 GARD] (1), Shannon Permanent[940.541293 GARD] (1). **Lost (1).**  
Actions: Place Hold Add to Cart

Results from Horowhenua Kete

[John SILBERY](#)  
NOK: Miss Rangi Silbery (sister), 36 Murphy St, Wellington previously Manakau Any use of this item must be accompanied by the credit "Adopt an Anzac Project"  
Related: 1 Discussion and 3 Images

[Pani PENE](#)  
Died age 40 years Any use of this item must be accompanied by the credit "Adopt an Anzac Project"  
Related: 2 Images, 1 Topic, and 1 Document

[Tama PAURINI](#)  
NOK: Amo Paurini (mother), Foxton Rd, Levin Any use of this item must be accompanied by the credit "Adopt an Anzac Project"  
Related: 2 Images and 1 Topic

[School Cadets Training - Model Exercise](#)  
Infringements of Discipline Prompted Sharp Reaction.  
Related: 1 Topic

[John TIMUIHA](#)  
NOK: Whawhai NATANA (TE HIWI) Mrs Donald Wilson, Kuku, Ohau, Levin (half sister) Previous Military Training: 3 years, 7th Wellington Regiment Declared Age: 20 years Height:  
Related: 2 Images and 3 Documents

[Group of Maori men cooking \(Otaki Churches gathering\)](#)  
Penciled on back - 46. Horowhenua Co.(or County?), Otaki Churches, Maori. Commissaries for the gathering was run on Army lines with Maori Battalion cooks and a quartermasters store which stocked

<http://library.org.nz/cgi-bin/koha/opac-search.pl?q=maori+battalion>

Here's a search results page in Koha's OPAC showing Kete results alongside the local records returned.

HLT's installation of Koha includes code for doing pretty much the same thing as Kete does for "external search sources".

At this point, this is the only area of automated integration in Koha. However, on individual records you can point back at a Kete site, just like any other URL, for a bibliographic record, too.

# Integrating Kete into Koha

- Will be available in Koha 3.4 release
- Catalyst has public git commits that have the code, if you want to back port to your Koha: <http://git.catalyst.net.nz/gw?p=koha.git;a=summary>
- There are several proposed improvements that are similar to Kete's ability to integrate Koha

As a result of using the  
OpenSearch standard,  
Kete and Koha can  
already integrate with  
many other services.

# Wrap up

- The original paper is available at <http://j.mp/9MCRD4>
- This presentation, along with notes, will be added to <http://kete.net.nz>

# Extras...

Here are examples showing how Kete Horowhenua integrates with over 100 content providers through Digital New Zealand (<http://digitalnz.org>) and thus gains rich results from prestigious collections.

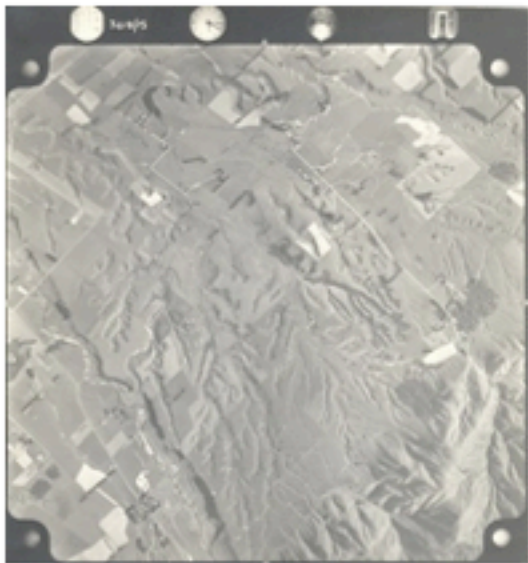
[Item Details](#) | [Edit](#) | [History](#) | [Discuss \(0\)](#)

## Land to northeast of Shannon, 1964

 Original Filename: 2005.025.0017c.jpg ([view](#))

Original Size: 1.1 MB

Original Image Type: image/jpeg


[Thumbnail](#)
[Small](#)
[Medium](#)
[Large](#)
[Original  
\(1.1 MB\)](#)

### Caption

Number at side of photo – 3418 / 15

Stamped on back - CROWN COPYRIGHT Additional copies of this Photograph may be obtained on application to the Surveyor-General, Lands and Survey Dept., Wellington.

Also stamped on back – N.Z. Aerial Mapping Ltd, Hastings

Aerial view of land to northeast of Shannon, 1964

### Tags

 Tags: [HHS Photograph Collection](#), [Shannon](#)

### Land to northeast of Shannon, 1964

Creator: N.Z. Aerial Mapping Ltd (Hastings)

User reference: 2005.025.0017c

### Other Resources

#### Results via DigitalNZ

[SHANNON](#)
[12. The Northeastern Radial - Vikings of the Su...](#)
[Wellington & Manawatu Railway station and yards...](#)
[The Beatles tour New Zealand](#)
[Grazing cattle, near Shannon](#)
[more »](#)

 Powered by  **DIGITALNZ**  
 ĀTIHI O AOTEAROA

<http://horowhenua.kete.net.nz/site/images/show/7839-land-to-northeast-of-shannon-1964>

Here we have a detail page for an image that is an aerial survey of Shannon.

On the right are the matches from Digital New Zealand's service. Let's click on the third result down.



Search for

Look for:  that contain my search words anywhere in the record

[New Search](#)

[Advanced Search](#)

Hello, Guest

[Sign in](#) using your existing National Library login or register for one for free

[My favourites](#)

[? Help](#)

[My Preferences](#)

## Details

[Back to results list](#)

### Wellington & Manawatu Railway station and yards, Shannon

**When:** Ca 1888

**Format:** 1 b&w original photographic print(s).; Collodion print 15.1 x 20.1 cm, mounted on album page 23.4 x 30.1 cm.; Horizontal image.; Single photograph.

**Description:** View of Shannon, looking north, showing the Wellington & Manawatu Railway station, yards and track. Photograph taken ca 1888 by Wigglesworth & Binns of Wellington.

**Subjects:** [Railway stations - New Zealand - Manawatu-Wanganui Region](#) ; [Railway tracks](#) ; [Clearing of land - New Zealand - Manawatu-Wanganui Region](#) ; [Shannon](#) ; [1888](#) ; [Collodion printing-out paper prints](#) ; [Landscapes](#)

**ID:** PA1-f-239-48

**Part of:** the archival collection(s)

[Top of collection hierarchy](#)

Wellington and Manawatu Railway Company Ltd :Views on the Wellington & Manawatu Railway .

[Parent collection](#)

Wellington and Manawatu Railway Company Ltd :Views on the Wellington & Manawatu Railway .

[Find in the Alexander Turnbull Library](#)

[Link to archived copy](#)

[Purchase this single image](#)



### Keeping these details

### Tagging

[What is tagging?](#)

Ignore my search and look for everything tagged:

**My tags for this:**

[Sign in](#) to see your tags and add new ones

**All tags for this:** [Cloud](#) / [List](#)

[Tags page](#)

<http://j.mp/9Z1t9y>

You can see that it is from the New Zealand National Library's Timeframes service that includes records from the Alexander Turnbull Library.

It's hooked me up with other stuff about Shannon that I might be interested in, but from an outside collection.



You are here : [Home](#) > [Collections](#) > Search

COLLECTIONS ONLINE: Search our objects and specimens

levin

Search

[Advanced Search - Objects](#)  
[Advanced Search - Specimens](#)

Search only with images

### Search Results

#### Topics (2)

[November 1918: Peace in Europe and influenza worldwide](#)  
[Biography of Wi Taepa](#)

#### Collection objects

Results 1 - 60 of 768 for [levin](#)

1 2 3 4 5 Next >



B.021930  
Levin views and  
Landscapes near Levin  
Adkin, Leslie



B.021934  
Levin views and  
Landscapes near Levin  
Adkin, Leslie



O.031597  
"In the Levin Domain - the  
Kaiser gets his deserts[sic]:  
'Armistice Celebrations in  
Levin, Nov. 13. 1918'. From  
the album: Family  
photograph album; 1917 -  
1920; Adkin, Leslie  
Adkin, Leslie  
13 Nov 1918



O.000245  
The Levin Co-op Dairy  
Butter factory, near Levin (2)  
Adkin, Leslie  
14.12.1936



#### PEOPLE & ORGANISATIONS (9)

- [Wong, Bing](#)
- [Thornley, Geoff](#)
- [Hanly, Gil](#)
- [Bryce, JF](#)
- [Silk, George](#)
- [Lattey, Edward](#)
- [Weitzel, Frank](#)
- [Te Rangihaeata](#)
- [King, Marcus](#)

#### PLACES (2)

- [Levin \(New Zealand\)](#)
- [Horowhenua \(New Zealand\)](#)

#### RESULTS FROM DIGITALNZ

- [Levin - Wikimedia Commons](#)
- [Levin Buildings - Kete Horowhenua](#)
- [Stuckey Street, Levin. - Kete Horowhenua](#)
- [Levin WA-07208-F - Alexander Turnbull Library](#)
- [D.W. Matheson - Kete Horowhenua](#)
- [Laurie B. Roberts - Kete Horowhenua](#)
- [11 Stuckey Street, Levin - Kete Horowhenua](#)
- [1 Victoria Street, Levin - Kete Horowhenua](#)

<http://collections.tepapa.govt.nz/search.aspx?term=levin>

That's not all, of course, using the open standard OAI-PMH DC to make each Kete's site's public metadata available (i.e. all text, plus things like links to thumbnail images), over twenty Kete sites are Digital New Zealand content providers.

These Kete sites materials now show up wherever Digital New Zealand search service is used, such as the Te Papa's (New Zealand national museum) online collection search as you can see here.

This completes the circle. Kete pulls in material and pushes out material equally easily and allows New Zealand Kete sites to become well integrated into overall culture and heritage collections of the nation.